

Prospectus

2022/23

BRIT Now

In partnership with



Royal Bank
of Canada



A platform celebrating the creative work of students at The BRIT School
Image by Scarlett Heywood Marx Year 13 IDD Student

brit.croydon.sch.uk/britnow

Welcome

The BRIT School is free to attend and open to everyone and is celebrating 30 years of unrivalled teaching and student achievement.

We believe in creativity and that young people of all backgrounds should be able to develop their creative talent and craft and make a powerful contribution to society. If nothing else the pandemic has proved that the qualities and values of The BRIT School matter. The world needs creativity and the creative industries more than ever before; digital solutions, imaginative ideas, art, entertainment. It needs polymaths who value science, history, maths and art all at the same time. It needs original, responsible and ambitious young people - like you - to make the world work. And it needs a more inclusive society where everyone matters. We are proud at our 30th year milestone to have successfully nurtured creative skills in students from every type of background, alongside providing a robust and full academic curriculum to be the person and citizen they want to be. We will give them a future and a path to further training as well as the tools and the industry knowledge.

Nearly 100% of all students who have graduated find work in a huge range of creative industries, or enrol for higher education.

If you choose to come here, you will be given the tools to carve out your career, the space to think and the environment to be you. This is a playground with professional boundaries where the raw talent of 14 – 19 year olds is nurtured by experienced world-class teachers. There are five qualities we want our students to take on when they come here: originality, responsibility, ambition, inclusivity and kindness. This means you will find your space here to unlock your creative potential, be your own person, be kind and act responsibly to others and yourself, and you will be accepting of the diverse community of artists you will work with every day. You will experience powerful assemblies on mental health, Black History and LGBTQ+, watch and participate in fantastic productions and exhibitions.

There are industry standard facilities in our studios, classrooms and theatres thanks to, amongst many, but specifically Andrew Lloyd Webber, Nile Rodgers, the Utley Foundation, YouTube Music, Royal Bank of Canada, Netflix, Tim Cook at Apple and the Arts Council, all who have worked to support this School. We have an impressive Board of Trustees and an active BRIT Parent Community.

Parents and carers - your child will be happy here, they will learn to be who they are, with skills and kindness. You will see for yourselves their work on show and you too will be welcomed as part of the BRIT Community. This is a hardworking, fun, passionate school packed with dedicated individuals who love the creative and performing arts and recognise the importance of a thorough and robust education in all subjects. We believe in developing well rounded, articulate, kind and dynamic young people and want to encourage you to read this prospectus with excitement and see if this is the right place for you.



Stuart Worden, Principal



"My children have blossomed at The BRIT School. It has been truly wonderful watching them excel in their chosen courses of Dance and Visual Arts and Design. The thing that has impressed me the most, however, and that you don't know about when you read the prospectus, is the amazing pastoral care and support the students receive. I honestly consider BRIT as our extended family!"

Marianne Cwynarski, Parent

“I can only pay tribute to Stuart Worden and his team in maintaining the excellence of BRIT through such challenging times, providing critical educational and pastoral support for its 1,400 students.

As The BRIT School celebrates its 30th birthday, it has been rightly recognised for its cultural contribution to the UK with support from the Arts Council England. This makes the school unique and, like the Awards from which its name derives, holds a special place – culturally, socially and economically - in the creative arts’ fabric of the UK.”

Tony Wadsworth CBE
CHAIR OF THE BRIT TRUST

Contents

Applying to The BRIT School	4-5
Additional Educational Needs at The BRIT School	6
Our Curriculum at Key Stage 4 & Post 16	8-9
Your Career Starts Here	10-11
Studying Creative & Performing Arts	13
BRIT Life	14
Our Courses	
Film & Media Production	16-17
Interactive Digital Design	18-19
Production Arts	20-21
Visual Arts & Design & Fashion, Styling & Textiles	22-23
Community Arts Practice	24-25
Dance	26-27
Music & Music Technology	28-29
Musical Theatre	30-31
Theatre	32-33
Frequently Asked Questions	34-35
Location & Catchment Area	37
Admissions Policy & Procedure	38-43
Thank You	44-45

Applying to The BRIT School

**We have two intakes
Key Stage 4 (aged 14-16)
and Post 16 (aged 16-18)**

Year 10 Applications

If you wish to apply for Year 10 at The BRIT School, you should start this process when you commence Year 9 at your current school. **Applications will be open from 2nd August 2021 until 10th January 2022.**

Post 16 Applications

If you wish to apply for Year 12 at The BRIT School you should start this process when you commence Year 11 at your current school. **Applications will be open from 2nd August 2021.** Please see below for the specific closing dates for Performing Arts and Creative Arts strands as they have different deadlines.

Fill in the application form: brit.croydon.sch.uk/apply
If you are applying for Key Stage 4 you need to make sure you apply by **10th January 2022**, and if you are applying for Post 16 the deadline is dependent on which course you are applying for. The closing date for Dance, Music and Music Technology, Musical Theatre and Theatre courses is **15th November 2021**. We give additional time to the following courses in order that portfolios can be prepared. For Community Arts Practice, Film & Media Production, Interactive Digital Design, Production Arts and Visual Arts and Design courses the closing date is **31st January 2022**. Any applications received after this date will go onto our waiting list.

If your application is successful

You will be invited to a practical workshop/meeting. Please read the Admissions Policy found on p.38 carefully before making an application as this will explain the practical requirements and admission criteria.

Do I live close enough?

We accept students from most of Greater London, and some parts of Kent and Surrey. Catchment postcodes are on p.37 or visit www.brit.croydon.sch.uk for a full list. We are allowed to take 10% of applicants from outside this area, but only if you show exceptional merit. We discourage long journeys so check the length of your commute from home to Selhurst station, situated five minutes walk from the School. You will need proof of your address during the application procedure to show you are in the catchment area.

Do I have to pay?

It is free to attend The BRIT School. Limits on the School's budget mean that we do need to charge for certain



activities, such as non-curriculum visits and peripatetic music and dance tuition. In some subjects, students will also need to provide their own specialist professional equipment; each course's individual documentation provides guidance.

Can I get financial support?

We have limited funds for bursary grants to support free school meals, school trips and peripatetic lessons. This support is available where the main family income comes from Job Seeker's Allowance, Income Support, Employment and Support Allowance, Widowed Parent's Allowance, Incapacity Benefit or a State Pension. We will also consider bursary applications from students with a low family income. Full details are available on our website and a copy of the Charging and Remissions Policy is available on request.

When will we find out?

Workshops will be held from December to April. We will endeavour to communicate decisions within four weeks of your workshop/meeting date.

Can I apply if I have Additional Educational Needs?

We have a diverse student body, and welcome applications from students with Additional Educational Needs (AEN).

Our AEN Department provides support for students with a range of additional needs, assisting them in fulfilling the course requirements and their potential while at the School.

If a student with Additional Educational Needs is granted a place, the AEN Department will make contact prior to their admission in order to begin the process of working together with parents/carers and students.

The BRIT School fully supports and adheres to the Equalities Act 2010 in making reasonable adjustments to support SEND students.

Please see p.6 on how to apply if you have AEN.

Application Process

UK or EEA National Check list for applying

The Schools authorised catchment area is most of Greater London and some parts of the Kent and Surrey catchment area.

We regret we are unable to accept applications from prospective Post 16 students residing in Scotland, Wales, Northern Ireland, The Isle of Man and The Channel Islands

- Register for one of our Virtual Open Evenings online at brit.croydon.sch.uk

Post 16 Virtual Open Evening

Wednesday 29th September 2021 6pm-8pm

KS4 Virtual Open Evening

Thursday 14th October 2021 6pm-8pm

- Choose which creative course you would like to apply for.
You can only apply for one course.

Applying online:

You can apply at brit.croydon.sch.uk/apply from 2nd August 2021 and you will receive an automatic email confirmation of receipt. Online applications submitted before this date will not be processed. Please note this is your electronic signature. You will be asked to supply:

- A passport sized photograph
- A copy of full Year 8 or Year 10 report, Year 11 if applying to resit Year 12. The report must contain a record of your attendance.

Non UK resident Check list for applying

Please see p.41 of our prospectus for more details for non UK residents.

- Register for one of our Virtual Open Evenings online at brit.croydon.sch.uk

Post 16 Virtual Open Evening

Wednesday 29th September 2021 6pm-8pm

KS4 Virtual Open Evening

Thursday 14th October 2021 6pm-8pm

- Choose which creative course you would like to apply for.
You can only apply for one course.

You must supply:

- A report: where school reports are not in English, please provide an English translation in addition to a copy of the original report. The report must contain a record of your attendance.
- A passport sized photograph

If applying online:

You can apply at brit.croydon.sch.uk/apply from 2nd August 2021 and you will receive an automatic email confirmation of receipt. Online applications submitted before this date will not be processed. Please note this is your electronic signature. You will be asked to supply:

- A passport photograph
- A copy of your latest report. This must be translated. The report must contain a record of attendance.

Catchment area and out of area applications

Please visit p.37 for full postcodes. In addition, the School can accept a maximum of 10% of the intake from outside the catchment area, where exceptional merit is shown.

Year Applying For	Course	Closing Date
Year 12 (Post 16) Performing Arts	Dance, Musical Theatre, Music & Music Technology, Theatre	15 Nov 2021
Year 12 (Post 16) Creative Arts & CAP	Community Arts Practice, Film & Media Production, Interactive Digital Design, Production Arts, Visual Arts & Design	31 Jan 2022
Year 10 (Key Stage 4)	All courses	10 Jan 2022

- Workshops will be held from December to April. Please note we cannot change the date offered. (See p.39 section 2B for the policy).
- Incomplete forms will not be processed.
- Please note we no longer accept paper applications.
If you require assistance please contact studentservices@brit.croydon.sch.uk

Apply online brit.croydon.sch.uk/apply

Additional Educational Needs at The BRIT School

How will having AEN or being neurodiverse affect my application?

It will not affect your application. You will apply in the normal way, but make sure you:

- Tick the AEN box on the application form
- Give as much detail as possible about your AEN and how it affects you
- Tell us if you have an Educational Health Care Plan (EHCP) and enclose a copy of the EHCP
- Tell us if you have access arrangements/ exam concessions

Sharing this information will not affect your chances of being seen, or being accepted onto a course. It will help us provide appropriate support through the application and interview process, to ensure your AEN does not disadvantage you.

You must however, still meet the Strand requirements.

We abide by, and fully support the Equalities Act of 2010.

Examples of AEN and Neurodiversity we support

We adapt our support to meet the individual needs of students.

- Dyslexia and Dyscalculia
- ASD
- ADHD/ADD
- Slower processing
- Visual/Hearing impairment

A range of other needs

Many of our students have a combination of needs and we adapt our support accordingly.

‘When a flower doesn’t bloom you fix the environment in which it grows, not the flower.’

Alexander Den Heijer

Types of support

- In-class support from one of our Learning Support Assistants (LSAs)
- 1:1 sessions
- Small group sessions
- Intensive English and Maths support
- Support with assistive technology and resources
- Speech and Language Therapy (Words First)

Staff Specialisms

While all our staff have the skills and experience to support students across the curriculum, the team have a number of specialist areas that our students can draw upon.

- Music
- Visual Arts & Design
- English
- Maths
- Science
- Dance
- Interactive Digital Design

Want to know more?

Visit www.brit.croydon.sch.uk/AEN

Successful applicants are invited to the AEN open day.

Feel free to contact the department with pre/post application questions.





Proud supporters of
The BRIT School



Our Curriculum

Key Stage 4



The Key Stage 4 Study Programme is made up of three parts:

1. Strand

This is the specialist creative area you have chosen to study at The BRIT School. Five hours a week is dedicated to the Strand time and there are additional activities, rehearsals, workshops, events and performances that make up the unique BRIT educational experience.

Strand Subjects at KS4, equivalent to one GCSE.

- Film & Media Production
- Dance
- Interactive Digital Design
- Music
- Musical Theatre
- Theatre
- Visual Arts & Design

2. Your Core Curriculum

Core Curriculum	Subject
	English Language (1 GCSE) English Literature (1 GCSE)
	Mathematics (1 GCSE)
	Combined Science (2 GCSE's or equivalent)
	Personal Professional Development - PPD (not examined)

The BRIT School is committed to providing a broad and balanced education that values the essential knowledge, skills and understanding within National Curriculum subjects.

3. Your Options

You select one preference in each of the three GCSE Option Blocks to complete your study programme at The BRIT School.

Block A		Block B		Block C	
Pref 1-3	Subject	Pref 1-3	Subject	Pref 1-3	Subject
	Dance		Art & Design		Dance
	Drama		Film		Drama
	Film		French		History
	Graphic Design (Technical Award)		History		Music
	History		Photography		Separate Sciences
	Music		Sociology		Sociology
	Sociology		Textiles		Spanish
	Spanish				

Upskiller Courses

The BRIT School is committed to enabling **all** students to succeed. The purpose of the Upskiller courses is to ensure students needing further provision and support are able to achieve the very best outcomes in GCSE English Literature, GCSE English Language and/or GCSE Maths. The Upskiller courses are instead of the Options courses and places are allocated based on our induction testing and prior attainment data.

Key Stage 4 Student Study Programme

The three parts make up the students' whole Study Programme at The BRIT School.

Strand + Core Curriculum + Options	Total hours per week = 25
------------------------------------	---------------------------

Please note that at Key Stage 4 and Post 16, qualifications stated are correct at the time of printing.

Our Curriculum

Post 16

Study Programmes

A Study Programme is what makes up a student's learning experience whilst at an educational institution. For all of our students at The BRIT School, this will primarily be taken up by time spent on their chosen Strand.

Students must be aware that when they commit to a Study Programme they are committing to The BRIT School's expectation of 96% or higher for attendance across all subjects.

Study Programme 1

All Post 16 provision must ensure that all students have either achieved or are working towards achieving at least a grade 4 in both GCSE Maths and either English Language or Literature. In order to study at The BRIT School, it is mandatory that if a student has failed to achieve a grade 4 in Maths and/or English they will be automatically placed on Study Programme 1. This will mean spending 15 hours per week on their Strand and up to an additional 2 hours on Maths and/or English GCSE pathways.

Study Programme 2

Our students will have applied to The BRIT School in order to focus on their Strand. This institution is hugely demanding on a student due to the high levels of expectation placed upon them and for many of our students, the recommendation will be to study purely their Strand e.g. Study Programme 2.

Some of our students would like to further their knowledge of another area or simply support their breadth of knowledge. For these students they must carefully consider the type of course that they wish to study; its relevance to their chosen career path; the impact that this may have on their Strand and the application and dedication that will be required to complete a fourth qualification. Subject to availability and suitability, they can select from Study Programmes 3 or 4.

Study Programme 3

Study Programme 3 is made up of 15 hours per week dedicated to your Strand and a further 5 hours per week dedicated to an AS subject/pathway. Whilst the Strand will cover two years of study, the AS will be completed in one year. There is also an expectation for all AS subjects that students spend an additional 5 hours per week on independent study for their pathways subject. Some subjects may require a portfolio or evidence of work on the induction day.

Study Programme 4

In exceptional cases, students may wish to follow Study Programme 4. This is made up of 15 hours per week dedicated to your Strand and a further 5 hours per week dedicated to an A level subject/pathway. Both courses will be completed over a two-year period. There is also an expectation for all A level subjects, that students also spend a minimum of 5 hours per week on independent study for their pathways subject.



Your Career Starts Here

Our dedicated Careers Team offers a suite of activities and individual support to students during their time at BRIT providing knowledge, guidance and information to widen their access to career options and progression into HE, FE, further training, employment and apprenticeships.

You will experience:

1. Events

Interview challenge days, Careers Days and Careers Fairs

2. Work placements

in a creative industry related field

3. BRIT Talks from a range of industry professionals.

Previous speakers have included Caroline Rush (British Fashion Council) Victoria Siddall (Frieze Fairs), Craig Fenton (Google) and alumni Millie Zero (EastEnders), Ruby Stokes (Bridgerton & Rocks), Joivan Wade (Doom Patrol), Tom Holland (Spider-man), Katie Melua, Will Bayley MBE and Cush Jumbo OBE

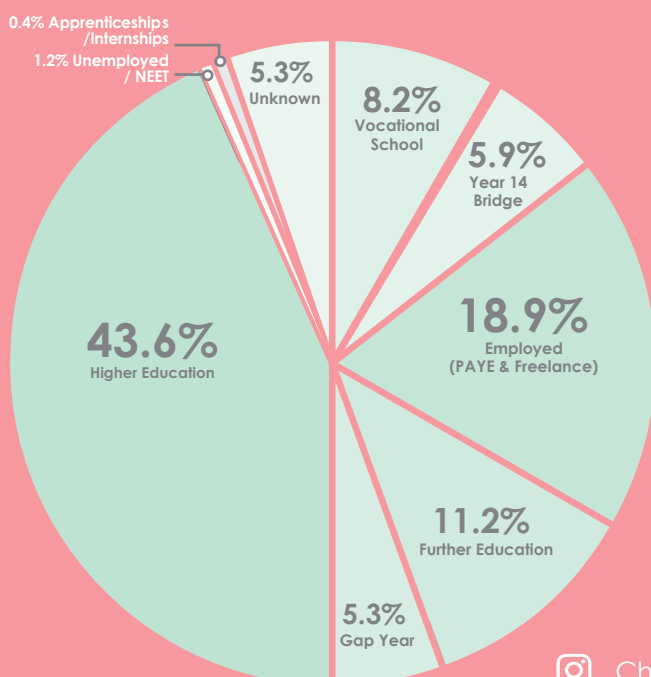
4. Long-term employability skills to support creative careers.

Students will learn and embed in their own practice the characteristics needed to be successful in the creative and performing arts industries. They will understand the importance of these key transferable skills in their future career development.

They will gain these skills from:

- Lessons
- Projects/live briefs
- BRIT Talks: Guest speakers, Q&As & Masterclasses
- Events
- Learning from career and labour market information
- Linking curriculum learning to careers
- Encounters with employers and employees
- Experiences/visits to workplaces
- Encounters with further and higher education
- Personal guidance

Destinations of BRIT students leaving in 2020



Check our Instagram stories [#AlwaysBRIT thebritschool](#)



FOR MUSIC

Here for you every step of the way

PRS for Music is here for you right from the start of your professional career. We'll ensure you're paid royalties for the songs and compositions you write or produce when they are broadcast, streamed, downloaded, and played live.

Through our charity partners, help is available to support you on your journey. PRS Member's Fund can provide therapy for those who may be struggling with mental or physical health, while PRS Foundation is the UK's leading charitable funder of new music and talent development. When the time is right for you, we'll be here for you.

Congratulations to The BRIT School on 30 years' transforming the music industry.

BECAUSE MUSIC MATTERS



prsformusic.com

Studying Creative & Performing Arts



Why study Creative Arts?

Film & Media Production
Interactive Digital Design
Production Arts
Visual Arts & Design

The confidence and creativity gained from studying creative subjects play a key role in developing the skills all employers crave:

- Problem-solving
- Generating ideas
- Teamwork
- Higher level of well-being
- Thinking outside the box
- Professionalism
- Motivation

BRIT Graduates can be found working at Apple, Framestore, PRG, Britannia Row, Royal Albert Hall, Facebook, ITV, BBC, Warner Music, ASOS, Sony, TikTok, Ralph Lauren as well as running their own businesses across the globe effecting change and bringing their unique perspective to the workplace.



Why study Performing Arts?

Community Arts Practice
Dance
Music & Music Technology
Musical Theatre
Theatre

Training in the performing arts develops:

- Confidence
- Team working
- Problem-solving
- Motivation
- Self-esteem
- Emotional and social skills
- Management of relationships
- Resilience
- Professionalism

BRIT Graduates go onto train at the top performing arts institutions across the country and further afield in institutions including: Bird College, Guildhall, LAMDA, RADA, Mountview, Rose Bruford, Royal Welsh College of Music & Drama, Leeds College of Music.

BRIT Life

Professional, useful and state of the art, our facilities are vital to what makes us one of the leading arts schools.

Facilities

Each department has facilities designed specifically for their courses. The following is a small selection of what we have on offer:

- **Two fully equipped theatres**
- **Three fully equipped dance studios**
- **Apple Mac suites**
- **A scenic construction workshop and paint frame**
- **Sir George Martin Recording studios and YouTube Music TV studio & gallery**
- **Costume design and construction rooms**
- **Library, archive and professionally trained librarians to help you with your research and studies.**
- **Make up and props workshop**
- **Print workshop and photography dark room**
- **Nile Rodgers Music Suite of practice rooms**
- **3D printer and laser cutter**

Peripatetic Classes

The BRIT School provides facilities for students to enrol for private instrumental, voice, theory or technology lessons with highly skilled and industry experienced professional music teachers. These lessons take place during the normal school day and a full course consists of 27 lessons. There is an annual fee for peripatetic lessons. Some bursaries are available to assist with the cost, provided through The Utley Foundation. Courses are available in voice, guitar (electric/ acoustic/classical), bass guitar, drums, piano, violin, saxophone, flute, clarinet, music technology, music theory, songwriting and DJing. All information and teachers' biographies can be found at

www.brit.croydon.sch.uk/peri

The Peripatetic Dance Programme offers all students the opportunity to take ISTD examination classes in Ballet, Modern & Tap from Intermediate to Advanced 2 level. There is also a host of Open Classes for students to access from Jazz to Ballet, Yoga and Commercial. The programme is in place to stretch students' experience and skills development. There is an annual fee for these lessons.

Khronos Dance Company

Khronos was founded in 2009 by dance teacher Julia Dark initially as an all-male youth dance company. The aim of the company is to provide a creative and performance platform for young males in a safe and encouraging environment. Through performance and outreach work Khronos Agora aim to break social stereotypes of males in dance offering a positive experience embracing masculinity and athleticism. The group became semi-finalists of Britain's Got Talent in 2016. In 2018, Khronos Girls was established to provide the same opportunities for our female dancers. They reached the semi-finals of Britain's Got Talent in 2019. The company also runs youth classes at the School for boys and girls aged 8 – 16 years.



Follow on Instagram:
khronosdance

PROUD TO SUPPORT
THE BRIT SCHOOL
AND ALL THE
EMERGING
CREATIVE TALENT



SONY MUSIC

Film & Media Production

Accredited by
ScreenSkills
Select

CREATIVE ARTS COURSE



Course Overview

At The BRIT School we are passionate about all things media. The quality of British film, TV and radio production is highly regarded worldwide and they make a key contribution to the UK economy whilst at the same time adding to this country's cultural richness. Within these industries there is a wide range of potential careers, from the creative, to the technical, and potential management roles. The skills that you will learn on our courses will prepare you for your first steps in an exciting and vibrant sector.

Student Experience

The UAL Extended Diploma Creative Media Production course has been designed to reflect both the film and broadcast industries. Using industry standard hardware, including a range of cameras and our own Radio and TV Studio (sponsored by YouTube Music), you will complete a wide range of industry-related projects, including music videos, short films, documentaries, and advertisements. Alongside this you will collaborate on live broadcasts covering both TV and radio. Underpinning these practical projects are more theory-based assignments that cover subjects such as scriptwriting, film studies and industry related topics. Our students have undertaken placements on a range of productions, from feature films, to advertisements and radio.

You'll have the opportunity to contribute to a number of exciting projects covering filmmaking and live broadcast. Every year, working as part of a crew, our students travel to a secret location for four days to shoot short films. BRIT Live is the department's very own magazine style show that is broadcast monthly via YouTube. We celebrate the success of all of our students through the department's annual award showcase held at the BFI Southbank and more recently as an online event. This year we are delighted to welcome Netflix as the supporter of this event and a new partner of our Film and Media Production course.

What Qualities do I need?

We are interested in students who possess and can demonstrate a passion in at least one area of media, whether it is the adrenaline rush of live broadcast or the painstaking process of crafting a film or documentary. It is essential that you are enthusiastic and can demonstrate both commitment and the ability to work as part of a team. If you are applying to join the Post 16 course you will need to bring a portfolio or showreel to the interview that showcases your dedication and experience in at least one area of media.

Typical Careers

Producer (Film, TV or Radio)
Director (Film or TV)
Broadcast Journalist (TV or Radio)
Camera Operator (Film or TV)
Editor (Film, TV or Radio)

Supported by

NETFLIX

Key Stage 4 Course Information Film & Media Production

What Will I Study?

You will study for a **BTEC Level 2 Tech Award in Creative Media Production, equivalent to GCSE 9-4**. The core area of study will be in filmmaking, with some additional work in radio and photography.

How Do I Apply?

These are the questions you need to answer when you apply online:

- a) Why do you believe you are suited to this course?
- b) Think about any relevant media work that you have completed inside or outside of school. Describe the project and your role within it.
- c) How will enrolling on this course benefit your future career?
- d) Choose one of the examples of student work on our website www.brit.croydon.sch.uk/FMP14 and analyse elements such as cinematography, sound, mise en scène and narrative.

Accredited by



Film and Media at The BRIT School is a ScreenSkills Select course. Being awarded this accreditation and receiving industry backing is a reflection of the quality of teaching and learning within the department and also credible proof that Film and Media at The BRIT School prepare you for entry into the industry from age 18.



Post 16 Course Information Film & Media Production

What Will I Study?

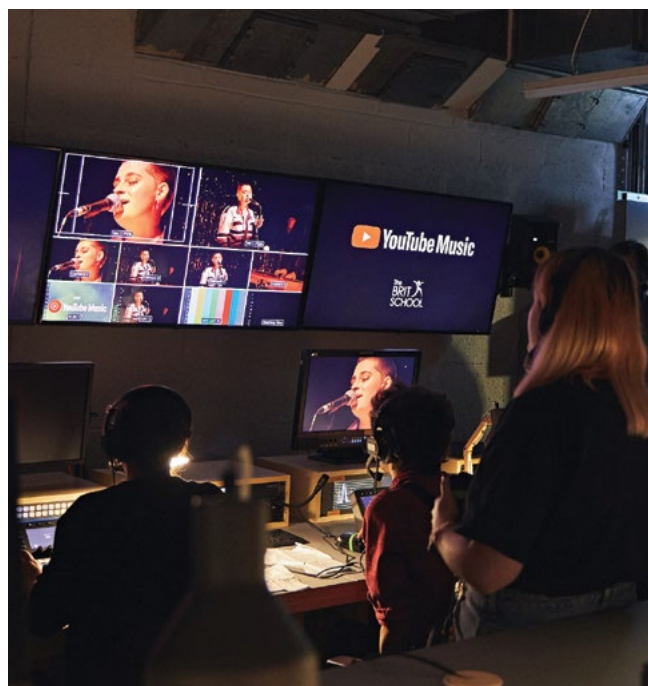
At the end of your study you will have gained the **UAL, Level 3, Extended Diploma in Creative Media Production and Technology**. It is the **equivalent of three A Levels** and can be translated into UCAS points for easy application to universities.

A wide range of media skills will be taught on this course, concentrating mostly on film and television, with some parts of the course focused on photography and radio.

How Do I Apply?

These are the questions you need to answer when you apply online:

- a) Why do you believe you are suited to this course?
- b) What other media-related work outside of school are you involved in? For instance, you may be a keen photographer, filmmaker, or a scriptwriter or have experience with live broadcasting.
- c) How will enrolling on this course benefit your future career?
- d) Choose one of the examples of student work on our website www.brit.croydon.sch.uk/FMP16 and analyse elements such as cinematography, sound, mise en scène and narrative.



Interactive Digital Design

CREATIVE ARTS COURSE



Course Overview

We are offering an innovative and exciting Interactive Digital Design course that will allow students to explore a range of new technologies and practices in design that are relevant to the pace of technological change. The Interactive Digital Design course introduces students to the design and study of graphic design, animation, UX design, 3D modelling, games design and photo manipulation.

Student Experience

So that you can get the most up to date experience on this course, there are fully equipped iMac design studios with the latest design software including the full Adobe Creative Suite and Autodesk Maya. Plus, you get to use hardware such as Wacom graphics tablets, iPad Pros, DSLR cameras and equipment. The Interactive Digital Design course promotes and exploits technology; mobile devices and social media within the teaching and learning environment.

The course includes visits from professional designers, animators, games developers and VFX Specialists. We have had talks and workshops from companies such as Apple, Aardman Animation, The Mill and Escape Studios. We ensure our students are kept up to date with current design initiatives by attending exhibitions, entering competitions and exhibiting student work in our Interactive Digital Design exhibition.

What Qualities Do I Need?

You should be a young designer who is interested in technology and the creative opportunities it presents. We want students who have ideas, who are interested in design and who are strong at working both independently and collaboratively. You have to be self-motivated and have an enthusiasm to learn. You will have ideally come from a media, ICT, art or design and technology background.

Typical Careers

Animator - 2D or 3D
Visual Effects Compositor
Games Designer
Illustrator
Web Designer
Graphic Designer

Key Stage 4 Course Information Interactive Digital Design

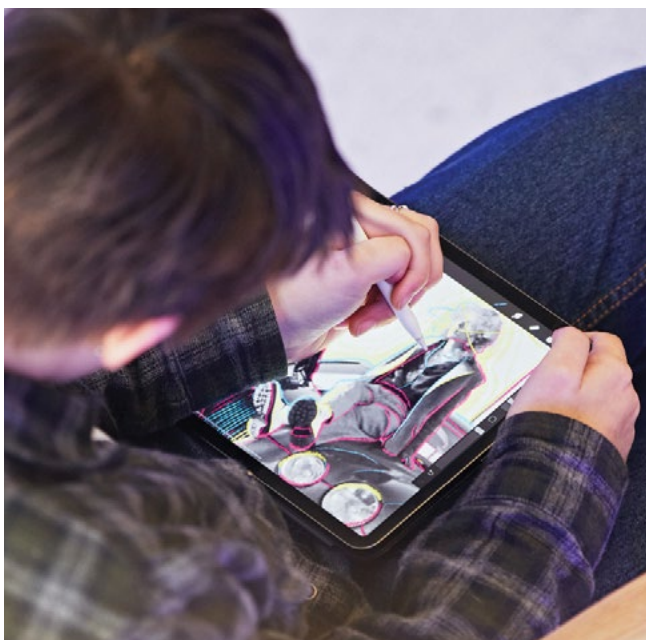
What Will I Study?

Alongside the specialist software and design sessions, you will study for a **NCFE Level 2 Technical Award in Graphic Design, equivalent to GCSE 9-4**. You will learn about the design and study of graphic design, animation and interactive story telling on this course.

How Do I Apply?

When you apply online, you will need to write a paragraph answering the following questions:

- a) Why do you think you are suited to studying Interactive Digital Design?
- b) What experience do you have of using computers, technology and design software?
- c) How do you think this course will help you in your future career?
- d) Choose something/someone who inspires you that is related to interactive digital design. Explain how and why you are inspired by it/them.



Post 16 Course Information Interactive Digital Design

What Will I Study?

In this extended programme of study you will explore a wider range of new technologies related to graphic design, photo manipulation, visual effects, animation, UX/UI design, 3D modelling and animation and games design. You will achieve a **UAL, Level 3, Extended Diploma in Creative Media Production and Technology (Interactive Digital Design)** at the end of your time at The BRIT School that will enable you to move into a variety of different career pathways. Professional practice is a core part of the course, and you will have the opportunity to expand your portfolio through industry relevant work placements. Previous students have attended top London design agencies and big companies including Apple, Google, Microsoft Games, Ogilvy and Warner Music for their work experience.

How Do I Apply?

When you apply online, you will need to write a paragraph answering the following questions:

- a) Tell us about yourself and your experience in Interactive Digital Design.
- b) Why do you think you are suitable for this course?
- c) Choose something/someone who inspires you that is related to interactive digital design. Explain how and why you are inspired by it/them.
- d) If you were to design and create your own interactive media product, what would it be and why?



Production Arts

Costume Design & Construction,
Set Design & Construction, Scenic Art,
Sound, Lighting & Stage Management

CREATIVE ARTS COURSE



Course Overview

Only available to those who are joining at aged 16, this course is a stepping stone to a backstage career in the theatre and related industries. You will study a wide range of skills in set design, costume, lighting and sound along with stage and production management. This course will give you the foundation you need to pursue a career in the performing arts industries. Students typically progress into apprenticeships, Higher Education or direct entry into the profession.

The BRIT School offers extensive theatre facilities, giving you the chance to learn and develop a wide range of practical skills. The course is staffed by experienced theatre professionals and much of the learning is delivered through work on fully realised productions. The experience you will gain on this course will prepare you for a career in Production Arts and production design. At the end of the two year course you will achieve a **UAL Level 3 Extended Diploma in Performing & Production Arts, equivalent to three A Levels.**

Student Experience

Every major production put on in the School is managed by the Production Arts department. After developing your skills across all areas you will focus on a specific discipline as you work towards your qualification. The equipment used by the department is industry standard and the department is supported by companies which include **PRG XL Video, Britannia Row, Funktion One, Royal Albert Hall, BRIT Awards, The National Theatre, MAC Cosmetics, Martin Professional and TSL.**

Typical Careers

Sound, Costume or Set Designer, Costume Maker, Set Builder, Scenic Artist, Prop Maker, Theatre Technician, Stage Manager, Technical Operators/Programmers

What Qualities Do I Need?

You will need to be interested in the design and production side of theatre or live events, dedicated, organised and a good timekeeper. A lot of the practical work you do will take place on productions outside of school hours. Students require a reasonable level in GCSE English and maths.

While not mandatory, some theatre production experience in any field would be useful.

Post 16

Course Information

Production Arts

How Do I Apply?

These are the questions you need to answer when you apply online:

- a) Think of a live performance you have seen in person or on TV/film. How do you think the lighting, costume, set or sounds made your viewing more enjoyable? What did it add? This could be anything from a live music concert, play or musical or performance.
- b) What creative activities are you involved in that are related to the course? For instance you may have been involved in a school play, drama club, or play a musical instrument.
- c) Why do you think you are suited to the Production Arts course?
- d) What do you think you will bring to the course?

Andrew
Lloyd
Webber
Foundation



We are delighted to announce Andrew Lloyd Webber Foundation as the Principal Partner of Production Arts at The BRIT School. As long-term friends of the School, we have a shared commitment to break down barriers to the creative industries for all young people who want the arts in their lives.

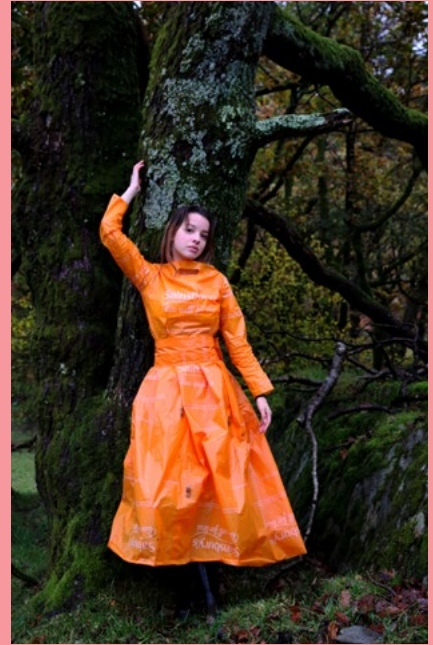


"I can honestly say looking back, its the most fun I ever had whilst learning anything. I used to go in on my days off!! I believe it's not only prepared me for university life but also the real world."

Kareen Thomas, Graduate of Production Arts Course 2004 works in stage management and props in theatre and film.

Visual Arts & Design and Fashion, Styling & Textiles

CREATIVE
ARTS COURSE



Course Overview

Creative and passionate students are welcomed to the Visual Arts and Design department. You will study traditional and contemporary techniques in visual arts, sculpture, drawing, painting illustration, community art, textiles, photography, digital design, graphic design, film making and fine art. From 2021 we have launched a new route at Post 16 exploring Fashion, Styling and Textiles. We deliver a vocational qualification that enables students to gain a greater understanding of the creative industries through exciting live briefs.

Student Experience

Visual Arts and Design has extensive facilities with studios that cater for 2D and 3D work. These facilities range from textiles, screen printing, photography studio/darkroom, and Mac & PC suite for digital manipulation. All projects have a vocational focus that offer opportunities to work with outside agencies as well as other departments within the School on community art projects.

We encourage all students to proactively exhibit their work, both at school and externally. We support the curriculum with enrichment projects, so students have the opportunity to consider their work in a wider professional context. Students can choose from a variety of activities to extend their knowledge and understanding or feed their entrepreneurial spirit. The School has excellent links with external galleries, such as TMRW hub, Somerset House, Dulwich Picture Gallery, Royal Academy of Arts, Chelsea School of Art and Design and professional design studios, where students have exhibited work. This year we worked with small businesses in Croydon on an Urban Art Trail in partnership with Royal Bank of Canada.

What Qualities Do I Need?

We believe those students who demonstrate an enthusiasm for arts and design and a passion to be a creative thinker, with the ability to overcome boundaries and challenges will be suitable candidates for this course.

Typical Careers:

Styling and Trend Forecaster, Fine Artist, Jewellery Designer, Body and make up Artist, Art Director, Marketing Director, Museum/Gallery Curator, Illustrator, Editor, Product Designer, Interior Designer Fashion Designer Photographer

Key Stage 4 Course Information Visual Arts & Design

What Will I Study?

If you join us at age 14 you will learn and develop your knowledge of the basics of drawing, painting, sculpture, photography, animation, fashion, illustration and textiles. As you develop through the course you also have the opportunity to choose a specialism. Once you finish your studies you will achieve a **BTEC Tech Award in Art and Design Practice, equivalent to GCSE 9-4.**

How Do I Apply?

These are the questions you need to answer when you apply online:

- What art and design techniques, equipment and IT have you used in your previous work? Why have you chosen these?
- What motivates you to being creative and working hard?
- Tell us about yourself and your experiences in visual art and design.
- Choose a piece of work by an artist or designer and describe what you think is effective about it.



Post 16 Course Information Visual Arts & Design

What Will I Study?

You will develop your techniques in drawing and life drawing, painting, sculpture, printmaking, illustration, web design, textiles, photography, live art, graphics, fashion, film making and many more areas of art. You will achieve a **UAL Level 3 Extended Diploma in Creative Practice: Art, Design and Communication, equivalent to 3 A Levels.**

Route One: Visual Arts & Design

Explores a variety of technical skills within: Fine art (sculpture, painting & drawing), photography/film, print, graphics and illustration.

Route Two: Fashion, Styling & Textiles

Explores a variety of technical skills with a fashion focus from: Textiles, pattern cutting, machining, print, photography, styling, fashion illustration, editorial and graphic design.

How Do I Apply?

These are the questions you need to answer when you apply online:

- What art and design techniques, equipment and IT have you used in your previous work? Why have you chosen these?
- Tell us about yourself and your art and design experiences.
- Which artists, crafts, people or designers have you been inspired by? How have you used them in your creativity?
- Choose a piece of work by an artist or designer and describe what you think is effective about it.



Community Arts Practice

Post 16 only

PERFORMING ARTS COURSE



Course Overview

If you have a passion for performing arts and also want to discover how your skills can play more of a role than just on stage, our Community Arts Practice (CAP) qualification provides you with the practical skills to enrich, inform and transform the lives of others through performance.

As the only Key Stage 5 course in the UK designed specifically to build skills in community arts delivery, you will train in areas such as theatre for change, teaching, facilitation, dance, singing and acting. You will also learn how to use the arts to explore a range of social topics and engage with the community. You will develop your skills as a professional, learning how to communicate and network with a diverse range of external clients and coordinate events.

This unique, creative and energetic course is a great way to develop your creativity, performance and teaching skills as an artist as well as give back to the community.

Available only if you are aged 16 or over, you will achieve a **UAL Level 3 Extended Diploma in Performing Arts** at the end of your course, which is the equivalent to **three A Levels**.

Student Experience

The Community Arts Practice course works with a range of partners including Crisis, Barnardo's, Age UK and Certitude developing projects both for and with these groups. Each year students work with hundreds of primary school children in the local community and have recently taken part in training to become 'Dementia Friends' in partnership with the Alzheimer's Society. Students have also had the opportunity to deliver performances and workshops at public festivals such as Camp Bestival.

Students also develop a range of Theatre in Education projects, most recently students working in partnership with Croydon Police, touring a piece of theatre as part of their work on preventing knife crime in the area. The performance toured for 13 weeks to 22 local secondary schools.

What Qualities Do I Need?

A passion for the arts is vital, as is a keen interest in working with a wide range of people of all ages and backgrounds. You will also need to be highly committed, passionate and responsible as this course requires you to work and study outside of school.

Typical Careers:

Arts Learning and Participation Manager,
Community Dance Artist & Facilitator,
Inclusive Theatre Director, Performing Arts
Teacher, Events Coordinator

Post 16

Course Information

Community Arts Practice

How Do I Apply?

These are the questions you need to answer when you apply online:

- a) Give an example of an activity or project that you were involved in that was carried out as part of a team and that you were particularly proud of.
- b) What do you think makes you a suitable candidate for the course?
- c) How do you think being involved in a performing arts project could enrich the life of someone who has not had the opportunity to be involved in the arts before?
- d) If you could create your own community arts project, what would it be and who would it be aimed at?



Community Arts Practice Destinations

Performing Arts, Applied Theatre and Education are all natural areas to study after this course. However, due to the diverse nature of the skills that are developed across the two years our students go on to have a range of different experiences:



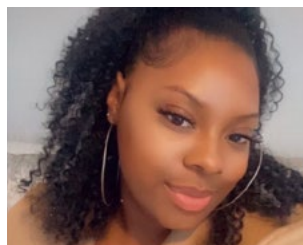
Molly Martindale

Community Arts Practice Student 2017, currently working as Production Secretary for ITV's This Morning.



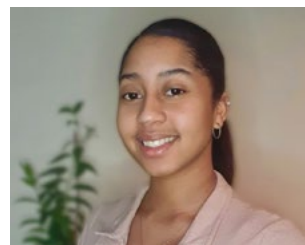
Immanuel Yeboah

Community Arts Practice Student 2019, Currently studying BA Acting at Royal Central School of Speech & Drama.



Frankie Booth-Dickson

Community Arts Practice Student 2018, Currently studying BA Drama, Applied Theatre & Performance at University of East London



Amaarah Needham

Community Arts Practice Student 2018, currently working as a Community Artist in a variety of youth settings.

"Studying Community Arts Practice was one of the best decisions I have ever made. Learning all the social skills, techniques and being able to work with people of all ages and abilities. I found this course opened up so many opportunities for me."

"Community Arts Practice has helped shape me into someone who can work in any setting with anyone of any personality and of any background."

"CAP has been a life changing experience that has opened so many doors for me and enabled me to go forward with a wide range of professional opportunities. I had so much fun and learnt so many valuable lessons."

"CAP has given me the tools to understand, articulate and apply skills that have enabled me to maintain a consistent career as a community arts practitioner."

Dance

PERFORMING ARTS COURSE



Course Overview

Ballet, jazz, tap, contemporary, street styles – whatever your dance style, you can learn more about it with us. From perfecting your skills in technical training to letting your creativity run wild in choreography and improvisational classes, our dance courses are designed to nurture your existing skills and lead you to experience dance in a way you have never imagined before.

As well as perfecting your technique in the studio, you will also perform regularly in our theatres as well as within the community, through professional visits, theatre trips and workshops

Student Experience

The six fully equipped dance studios are always bustling with activity, and each of them has hi-fi facilities with iPod connectivity, TV, laptops and projectors, plus mirrors.

You will also take part in show-stopping performances in our two on-site theatres and there is also the opportunity to perform at venues outside of school.

There is a Peri Dance Programme which is available to enhance the Strand offer at a small fee. Bursaries are available, thanks to the support of the Leverhulme Trust. We offer ISDT Examination classes and Open Classes in a range of genres.

Supported by **LEVERHULME
TRUST**

What Qualities Do I Need?

You should be passionate about dance and have a talent for it. If you are applying aged 16, it is desirable that you have had previous dance experience. You should also have good time-keeping and have a reliable and determined character.

Typical Careers:

Contemporary Dance Artist
Choreographer
Commercial or Musical Theatre Performer
Teacher/Animateur

Key Stage 4 Course Information Dance

What Will I Study?

You will be studying for the **RSL Level 2 Technical Certificate in Performing Arts, equivalent to one GCSE**, which teaches you more about choreography, performance, technique and the working practices of the performing arts industry. The course is a combination of Internal and external assessed content considered valuable to your developments in the Dance field.

How Do I Apply?

These are the questions you need to answer when you apply online:

- a) What and who has inspired you to study dance?
- b) Tell us about your dance training and experience to date.
- c) How do you think this course will help you in your future career?
- d) Describe the skills needed by a dancer to succeed in their career.



Post 16 Course Information Dance

What Will I Study?

You will be working towards the **UAL, Level 3, Extended Diploma in Performing Arts, equivalent to studying for three A Levels**. You will learn a range of dance techniques, performance techniques and the theoretical aspects of the art.

As well as spending time focusing on perfecting your dance abilities you will also learn additional skills in singing, physical theatre and the business side of the industry.

How Do I Apply?

These are the questions you need to answer when you apply online:

- a) What and who has inspired you to study dance?
- b) Tell us about your dance training and experience to date.
- c) How do you think this course will help you in your future career?
- d) Describe the skills needed by a dancer to succeed in their career.



Music & Music Technology

PERFORMING ARTS COURSE



Course Overview

Whether your goal is to be a performer, producer, songwriter or music business professional, studying at The BRIT School will help you develop industry-relevant skills within a challenging, supportive and creative vocational environment. We offer a varied and rounded musical education that will stretch and challenge you, as well as provide you with the broad range of skills you need to succeed in the industry.

Student Experience

Every year students are offered multiple performance opportunities which may include the School's onsite theatre as well as a range of external venues. Our close relationship with The BRIT Trust and the support of the School's governors often results in music students being invited to perform at a range of prestigious events and venues each year. The music department benefits from outstanding facilities including professionally equipped rehearsal rooms, digital recording studios, Apple Mac suites and more. All of this practical experience is ably supported by a strong theoretical and analytical course that prepares students for the world of work or for further music study.

What Qualities Do I Need?

We are looking for imaginative, open-minded, reliable team players who are focused and motivated. Being organised, responsible and able to meet deadlines is very important to us. You must also have an interest in the study of music as a wider subject (not just performance/production) and have the initiative to create musical opportunities for yourself and your peers. It is vital that students are already actively involved in musical activities both in and out of school.

Typical Careers:

Performing Artist, Producer, Sound Engineer, Songwriter, Music Teacher, Music Business (A&R, Music Promoter, Publisher) or Session Musician.

Key Stage 4 Course Information Music & Music Technology

What Will I Study?

The **RS Level 2 Certificate in Performance/Technology and Composition for Music Practitioners (equivalent to one GCSE)** allows you to develop your skills and knowledge in many areas including music theory, practical work, music technology and composition skills. There are regular performance opportunities and students benefit from being surrounded by like-minded musicians.

How Do I Apply?

For Key Stage 4 you will be a confident performer on at least one instrument or voice. Although we do not offer a separate music technology course at Key Stage 4, we encourage applications from those who specialise in this area, so long as they can play an instrument and/or sing to a good standard. **To apply for entry into Year 10, these are the questions you need to answer when you apply online:**

- a) List your practical strengths (instruments/voice/production) in order of ability and give a clear indication of which one you will audition with.
- b) Describe in detail your musical experience and/or training since you started secondary school. This could include performances, composition work, recording sessions or anything else that you consider relevant both in or outside school.
- c) Tell us about a songwriter or producer that you admire and why, using musical vocabulary as appropriate.



Post 16 Course Information Music & Music Technology

What Will I Study?

At Post 16 we offer two music courses: 'Music Route' and 'Music Technology Route'.

For the Music Route you will be a confident performer on at least one instrument or voice.

For the Music Technology Route you will show a strong aptitude for and experience of music technology.

For both routes we offer the **UAL Level 3 Extended Diploma in Music Performance & Production, which is equivalent to three A Levels**.

Both routes will study subjects such as the music industry, music history and theory.

The Music Route will additionally include songwriting, solo and ensemble performance, ethnomusicology and music technology.

The Music Technology Route will include subjects such as recording, DAW production, mixing, DJ skills and ensemble performance.

How Do I Apply?

You may apply for one route only. **To apply for entry into Year 12, these are the questions you need to answer when you apply online:**

For Music Route applications please answer the following for question a):

- a) List your practical strengths (instruments/voice/production skills etc.) in order of ability and give a clear indication of which one you will audition with.

For Music Technology Route applications please answer the following for question a):

- a) Give a detailed summary of your experience and/or training in music technology, including any software that you are familiar with.

Both routes answer the following:

- b) Describe in detail your musical experience and/or training since Year 10. This could include performances, composition work, recording sessions or anything else that you consider relevant.
- c) Give an example of an occasion when you have demonstrated professionalism in your own work or study.
- d) Pick an important event in the history of popular music and explain its significance.

Musical Theatre

PERFORMING ARTS COURSE



Course Overview

Whether you join this lively department at aged 14 or 16 you will spend your time improving your technique in singing, dancing and acting skills through hard work and discipline. If you are a versatile and open minded performer then you will fit right in to this rigorous and vibrant course.

Student Experience

You will explore a wide range of performing arts work and develop as both an artist and as a person. The course is designed to give equal focus to acting, singing and dance and the development of skills and knowledge in these performance disciplines.

There are a variety of performance opportunities across the course so you can put technique into practise. These include devising, working in the community and public performances of existing and new musical work, all produced to the highest technical standard in the School's theatres and external venues. Recent productions include: *Rent*, *Jesus Christ Superstar*, *Into the Woods*, *Cases*, *The Last Five years*, *John & Jen* and *Songs for a New World*.

What Qualities Do I Need?

We welcome students with a wide range of skills and backgrounds, and this creates an environment where our students are encouraged to respect and appreciate differences. The course is very hard work and is likely to be very different to what you have experienced so far in your school life. Students will need to commit wholly to a full timetable, long hours and expect a high degree of intensity within the training.

As a department, we are at the forefront of exploring new writing and will expect you to be open minded in your response to challenging material and repertoire which may push boundaries.

We are looking for potential in all three areas of the performing arts and a 'can do' attitude.

Typical Careers:

Performer
Teacher
Producer - TV or Theatre
Director
Writer
Composer
Choreographer

Key Stage 4 Course Information Musical Theatre

What Will I Study?

You will study for a **RSL Level 2 Technical Certificate in Performing Arts, equivalent to one GCSE**. On the course you will explore a variety of performance styles, with an equal focus on singing, dancing and acting. By the end of the course you will have developed practical and theoretical performance skills that will put you in good stead to continue your study of musical theatre at a higher level.

How Do I Apply?

These are the questions you need to answer when you apply online:

- a) Why do you feel you are suited to studying Musical Theatre?
- b) What do you think you will learn about yourself by studying Musical Theatre?
- c) Which musical would you most like to be in? Which one would you least like to be in? Explain the reasons for your choices.
- d) What performance have you been involved in that has influenced your decision to study Musical Theatre?



Post 16 Course Information Musical Theatre

What Will I Study?

This course focuses on developing your skills and knowledge in all areas of performing arts and lets you explore new performance techniques. With an equal focus on singing, acting and dancing you will get practical opportunities to practise what you've learnt through performance inside and outside of school.

Once you complete your course you will have achieved a **UAL, Level 3, Extended Diploma in Performing Arts, equivalent to three A Levels**.

How Do I Apply?

These are the questions you need to answer when you apply online:

- a) What do you think are the five most important attributes of a musical theatre performer?
- b) With reference to your future aspirations, what are your expectations of the Post 16 Musical Theatre course at The BRIT School?
- c) What do you feel you contribute to a team? Give an example of your participation in a team event.
- d) Tell us about a musical theatre composer who you admire. Explain the reasons for your choice.



Theatre

PERFORMING ARTS COURSE



Course Overview

Acting, directing, writing or producing: whatever your passion for theatre, you can learn how to refine your skills on our Theatre course. Not only will you get plenty of opportunities to perform, you will also develop skills as a writer, study contemporary texts and have the opportunity to develop your directing skills.

You will perform in at least eight productions during your time at the School, and you will also get the opportunity to tour outside of the School, work with community groups and attend trips to the theatre.

At the end of your course you will be equipped with the practical skills to join the professional world of theatre or continue your education and training elsewhere.

Student Experience

There are a variety of productions each year presented by the Theatre department, so you will have many opportunities to get involved in a performance.

As well as this, you might just get the opportunity to perform at professional venues such as the Trafalgar Studios or New Wimbledon Studio Theatre.

The department's month-long season, Common Ground, showcases a wide genre of plays here at the School. Strawberry Picking, a new writing season, lets you create your own theatre and organise your own performances independently: a creative challenge, but a rewarding one!

What Qualities Do I Need?

You should have a passion for theatre and the arts and have the commitment and the drive to push yourself. You should also feel comfortable working in a team and be keen to pursue a career in the world of theatre.

Typical Careers:

Writer, Producer, Actor, Director, Teacher, Marketing/PR Manager

Key Stage 4 Course Information Theatre

What Will I Study?

If you join us aged 14 you will develop the practical skills for performance including voice and movement. You will have the opportunity to learn how to create your own work through the process of devising theatre as well as perform in scripted plays.

At the end of your studies you will achieve a **RSL Level 2 Technical Certificate in Performing Arts, equivalent to one GCSE.**

How Do I Apply?

These are the questions you need to answer when you apply online:

- a) What do you think your best performance has been so far and why?
- b) What do you think is the most effective piece of theatre you have seen and why?
- c) Why do you think theatre is important?
- d) What do you think you will learn and what do you hope to achieve by studying this course?



Post 16 Course Information Theatre

What Will I Study?

You will be studying for a **UAL, Level 3, Extended Diploma in Performing and Production Arts, which is equivalent to three A Levels.**

You will study both the theory and practice of a wide range of theatre styles through workshops and productions. From studying important acting techniques and works from pioneers of the theatre industry, to performing in a Shakespeare play and working with community groups, you will get a well-rounded experience of what you can expect from working in theatre professionally.

How Do I Apply?

These are the questions you need to answer when you apply online:

- a) What was your most recent role? Please name the play, playwright and character you played if relevant. Do you think you were successful, and why?
- b) What do you think is the most effective piece of theatre you have seen and why?
- c) What actors and actresses do you admire and why?
- d) Why do you think theatre is important? Explain your reasoning through examples of your experience making and seeing theatre performances.



FAQs

Can I apply for more than one Strand?

Applicants can only apply for one Strand.

Can I change Strand?

You should send an email to studentservices@brit.croydon.sch.uk cancelling the original application; the email should contain your name and the Strand you originally applied for as well as any reference number you may have. You will then have to begin the application process again. If the new application is received after the relevant deadline it will be treated as a late application.

What documents will I need when I apply?

Key Stage 4 students will need to supply a copy of their Year 8 report, Post 16 students will need a copy of their Year 10 report. All reports must contain attendance. At some point during the application process you will be required to supply your passport (to be copied) and a copy of a utility bill which should show the address where you were living at the time of application. Once we have completed our checking procedure the digital file will be permanently deleted.

I was unsuccessful can I apply for another Strand?

If your application is not successful you cannot apply for another Strand unless you are specifically recommended by The BRIT School in writing and you are not in the process of appealing a decision made by the Strand you originally applied for.

Why is there a different application closing date for Post 16 Creative Strands?

This is to allow time for Portfolios to be developed.



When will I know if I have a place?

We will endeavour to communicate decisions within four weeks of your meeting by email. **All decisions will be communicated via email. You will not receive any information by fax or telephone.**

How we will communicate with you

Please ensure that all email addresses provided are correct. We use this method to communicate with you. **Please ensure you check your junk and spam boxes. Please make brit.croydon.sch.uk a safe sender.**

All responses are sent within our published time criteria and the School cannot therefore accept responsibility for any auditions or meetings that are missed due to either incorrect contact information supplied by the applicant or where our correspondence has not been read by the applicant/parent within the published time criteria.

I have already studied Year 12, can I apply?

Applicants who have already studied at Year 12 can apply to us but they will have to re-sit Year 12 again. They cannot be 18 years of age at the start of the course. They should submit a Year 11 report alongside their application.

What if I miss the Virtual Open Evening?

Due to busy timetables and schedules we are unable to facilitate visits at any other time of the year, however you are welcome to come to any public ticketed events as advertised on linktr.ee/britboxoffice

We will be holding two Virtual Open Evenings online this year to give you greater flexibility to learn more and ask live questions.

Plus the talks will be filmed and available to view on youtube.com/BRITSchoolFilms

All potential students are welcome to sign up and attend on either evening however the events will be aimed at the specified year group. Details will be posted on www.brit.croydon.sch.uk/openeve and on social media.

What if I cannot make my meeting/ audition/workshop?

We are only able to try and change meeting/audition dates for Public Exams (not mocks) and for hospital appointments.

Do I need to bring anyone to my meeting and if so how many people can I bring?

Due to the high volume of applicants that attend these meetings we ask that you are accompanied only by your parent(s)/carer(s). The parent(s)/carer(s) of Post 16 applicants do not have to attend the meeting if they do not wish to. It is mandatory for Key Stage 4 applicants to be accompanied by their parent(s)/carer(s) in order for the meeting to take place. Parents can only attend the meeting and NOT the workshop.

I live overseas. Can I apply?

We will not accept Key Stage 4 students if their parents intend to remain abroad. Please see p.41 for more details for non UK residents.

If I live out of the catchment area will I get in?

We take the address given at the point of application, not where you may move to if you are offered a place. Out of area places are very restricted; we can take up to 10% of students outside the catchment area. Applicants from outside the catchment area need to show exceptional merit throughout each stage of the application process.

What proof is required to show I am in the catchment area?

You will be asked to supply proof of your address at some point in the application procedure (usually on enrolment day). This can take the form of a utility bill, tenancy agreement etc; the proof supplied cannot be more than three months old. We do not accept mobile phone bills. The bill should reflect the address on your application form. **Please note if you are unable to supply this information it could result in your place being withdrawn.**

Do I have to pay to attend The BRIT School?

There is no charge to attend The BRIT School.

Do you offer accommodation locally?

We do have a list of local residents who offer rooms to be let, but parents must take responsibility for the accommodation being satisfactory and make sure that the day-to-day support for the student is in place. This applies to Post 16 students only as we will not accept applications for Key Stage 4 if the applicant will need to live independently. **Please note The BRIT School does not vet these landlords.**

Apply online brit.croydon.sch.uk/apply



The BRIT School's Saturday Classes

Performing, Creative and Media classes for 8–18 year olds



BRITKids.org

Branches in Croydon and Canterbury.



BRITKidsplus.com

Can't get to one of our branches? Join us on BRITKids+

Follow us:    



Creativity. Community. Challenge.



WARNER
MUSIC
UK

PROUD
TO SUPPORT
THE NEXT
GENERATION
OF *Talent*



WARNER
CLASSICS



Our Location & Catchment Area

The BRIT School 60 The Crescent Croydon CR0 2HN

Public Transport

Train Services:

Selhurst, Norwood Junction and East & West Croydon stations (change at East or West Croydon for Selhurst Station).

The BRIT School is well signposted from Selhurst Station.

Buses:

75 & 157 available from Norwood Junction, 75, 157, 50 & 468 from West Croydon.

Car parking

We encourage all visitors to use public transport as there is limited parking in the car park and the area gets very congested. Also nearby roads may require a parking permit. If you do need access by car, we operate a car registration recognition system in our car park on Dagnall Park. Please report to Main Reception on arrival to register your car. For directions please use postcode SE25 5PL in your search engine or sat nav.

Useful contacts:

www.tfl.gov.uk
www.nationalrail.co.uk

Catchment Area Postcodes

The School's authorised catchment area is all of Greater London EXCEPT: Postal districts CM13 & 14; EN 4 - 8; HA1 - 8; KT8, RM 1 - 7, 11, 12, 14, 15; UB8 - 10; WD2, 3 & 6.

In addition the following postal districts are included: BR6 & 8; CR0, 2, 3, 5, 6; DA1, 2, 4, 5, 9, 10, 14; E18 & E20; KT4, 6, 9, 17 - 21; RH1, 2, 6 - 11; SM2, 3 & 7; TN13, 14, 16.

A full list of inclusive postcodes can be downloaded from www.brit.croydon.sch.uk

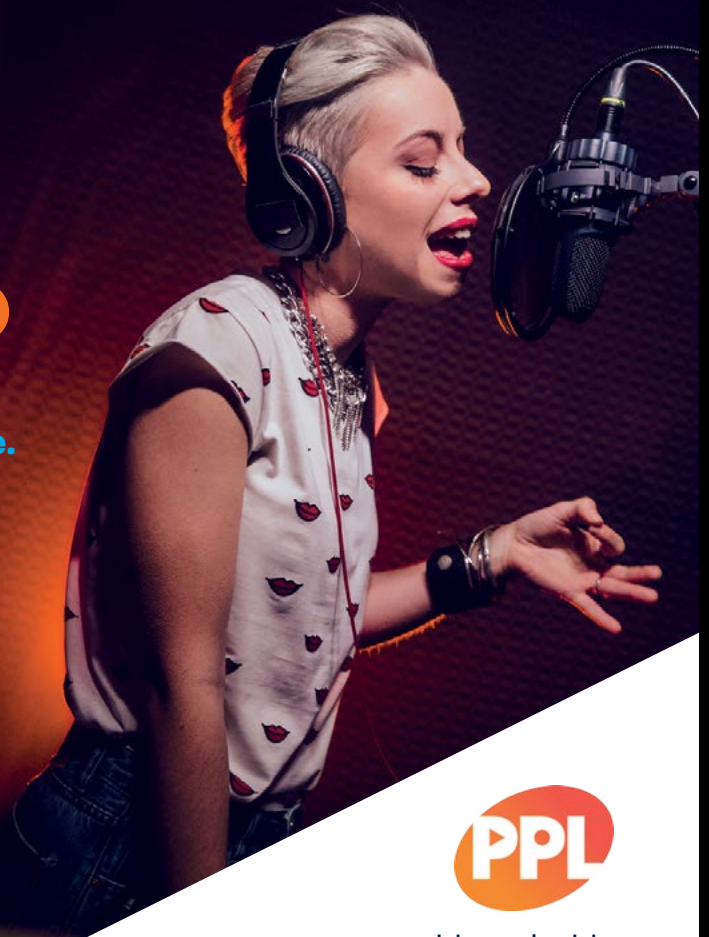
In addition, special consideration can be given to applicants of exceptional merit who are out of catchment area up to a maximum of 10% of the intake.

► MUSIC MAKES THE WORLD A BETTER PLACE ●

Your career in music is just beginning, so make sure you start on the right note.

At PPL, we believe that those who make recorded music deserve to be paid fairly when their music is used.

If you've performed on recorded music that has been played on TV, radio or in public places, you could be entitled to royalties. Register your recordings and sign up for international collections so we can collect royalties for you.



ppluk.com | ppluk

Admissions Policy & Procedure 2022/23



The BRIT School has always been the place to be you, regardless of race, sexuality, gender, disability or any other characteristic.

Today and every day we are united against all forms of prejudice, discrimination and racism.

The
BRIT
SCHOOL

1) Policy

1A) Admission: practical requirements

- i) Age (all ages are as at 1 September in the year admitted): Students are admitted at:
 - 14 years of age for Year 10/ Key Stage 4 (KS4) (after Key Stage 3 (KS3))
 - 16 years of age for Year 12/Post 16 courses (after KS4/GCSE)
 - Applicants who are younger than this or who are two or more years older cannot be considered. Applicants who are no more than one year older than this (i.e 15 years of age for KS4 or 17 years of age for Post 16) may apply, and should make clear in their application why they are applying out of their expected age group.
 - We do not admit students into Years 11 or 13 or mid-year into any year group.
- ii) Numbers: Allocation of places:
 - Year 10: approximately 200 students - proceeding to Year 11
 - Year 12: approximately 500 students - proceeding to Year 13
 - Availability of places for Year 12: places for applicants from other schools will be dependent on the number of BRIT School Year 11 students admitted to remain for Post 16 study.
- iii) Catchment Area:

The catchment area for The BRIT School is available on our website and referred to on p.37.

The School also has a dispensation to give special consideration to applicants of exceptional merit from outside the catchment area, subject to restricted numbers, providing that they meet the admission criteria 1B) and follow the general guidelines for accommodation (see section 3).

1B) Admission criteria

- i) The School seeks to admit students who:
 - aim for a life in the world of arts, entertainment and communication or related fields
 - demonstrate (with evidence) a commitment to the performing, visual or digital arts and their associated technologies, either in performance itself or in associated activities
 - demonstrate, during the application procedure, a real determination to study, practise and succeed and that they have the drive for the demanding schedule, details of which are set out in each departmental section
 - demonstrate to the teachers they meet or work with during the application procedure that they would benefit from the education The BRIT School offers. The staff they meet will be assessing:
 - the capacity to acquire the necessary skills and to continue to improve;
 - an understanding of the career and further education choices towards which joining the School will lead them;
 - the relevance of the course to their future career plans;
 - a passion for the art form applied for;
 - relevant current and past activities, including in school;
 - levels of concentration and determination.
 - if applying for KS4 can show that they are working with commitment in KS3, and if applying for Post 16 courses, can show that they are working with commitment in KS4
 - if applying for KS4, are considering a four year commitment to study.

NB Passage from KS4 to Post 16 is not automatic.

ii) Equal Opportunities:

The School is committed to equal opportunities and admits students across the full spectrum of academic abilities. The aim is that the School should broadly reflect the community of Greater London. All students have equal access to the curriculum and there is a learning support programme for students with additional learning needs.

2) Procedures

2A) What the applicant must do

i) Prospectus and Online Application Form

Students or parents/guardians may obtain a prospectus and apply in any of the following ways:

- by reading and downloading via our website, www.brit.croydon.sch.uk and applying online.
- by signing up and joining The BRIT School Virtual Open Evenings 2021 (See p.5)
- by phone or written request
- from careers conventions in their school or neighbouring schools

NOTE: We strongly recommend joining online for the Virtual Open Evenings before applying. This will enable parents and applicants to understand the way in which the School works.

ii) Specialism

- Applicants must apply for a specific course. All further arrangements in relation to an application will then be based on this initial choice.
- Should a student wish to change their specialism course, send an email to studentservices@brit.croydon.sch.uk stating their name, the Strand they have applied for, and that they would like the application withdrawn. The student must start the application procedure again and it will be treated as a new application so please ensure that it is received before the deadline date.
- Applicants whose applications are not successful at any stage may not apply for a different course unless specifically recommended by the School in writing.

The deadline dates are:

Year Applying For	Course	Closing Date
Year 12 (Post 16) Performing Arts	Dance, Musical Theatre, Music & Music Technology, Theatre	15 Nov 2021
Year 12 (Post 16) Creative Arts & CAP	Community Arts Practice, Film & Media Production, Interactive Digital Design, Production Arts, Visual Arts & Design (We give additional time to these Strands in order that portfolios can be prepared)	31 Jan 2022
Year 10 (Key Stage 4)	All courses	10 Jan 2022

iii) Completing the Form

The online application form will be available from 2nd August. Applicants are encouraged to apply well before the deadline dates as this helps the administration of the applications procedure. Please note that late applications will be added to our waiting list. There is no guarantee that these applications will be considered by the strand director.

Please check these deadline dates carefully; we will not be able to make exceptions if deadlines are missed because the table has not been read correctly.

- Application forms must be completed online in accordance with the instructions.
- When completing the online form the applicant will be asked to upload a copy of their Year 8 or Year 10 (depending on Year applying for) school report which should include attendance. The application is considered incomplete and may not be processed until this information is supplied. You may also email a copy of your report to studentservices@brit.croydon.sch.uk
- Applicants who do not submit a complete application in time to be processed by the relevant deadline might find that all places in their chosen specialism have been allocated. Experience has shown that this will almost certainly be the case for Dance, Music, Musical Theatre and Theatre. The other courses may have availability after this date.

Admissions Policy & Procedure 2022/23

- If, on receipt of a late application, all places in the chosen specialism have been allocated, or it appears from the number of applications already underway that all places are likely to have been allocated by the time these applications have been assessed, the application will be placed on a waiting list without being assessed. If places become available before the start of the academic year, applicants on the waiting list may be invited to continue the procedure as outlined in 2B) and 2C).
- All applications received by the relevant deadline will be dealt with entirely on their merits.

In addition, special consideration can be given to applicants of exceptional merit who are out of catchment area up to a maximum of 10% of the intake; Refer to 3i) for more information.

2B) Procedure following the School's receipt of the application form

- All complete application forms received on time will be reviewed against the criteria in section 1B(i) and applications which clearly do not fulfil these criteria may be unsuccessful at this stage.
- No applicant with with an Educational Health Care Plan (EHCP) nor who are Looked After Children (LAC) will be excluded from the process at this point. This is in recognition that young people in these situations might require additional support in order to present themselves most fully. Having reached the workshop/audition/meeting, where appropriate support will be available, these candidates will be assessed against the published criteria in the same way as other candidates.
- Depending on which specialism has been applied for, students will be invited to participate in workshops, auditions or meetings with at least two

members of The BRIT School staff, usually followed by a structured discussion.

- The applicant will be informed of the format at least two weeks before the due date and whether they have to prepare anything or bring anything to the session.
- All applicants for a particular specialism will go through the same procedure (e.g. all dance students will have a workshop, all art students a viewing of work and a meeting).
- The session, whether it is a workshop, audition or meeting, is intended to be with, and for the benefit of, the applicant. Therefore, parents/guardians are requested not to participate. However, parents/guardians of KS4 applicants are expected to attend the structured discussion which may follow in case practical issues of travel, accommodation and attendance need to be discussed. Parents/guardians of Post 16 applicants are also welcome to attend this structured discussion.
- The cycle of workshops/auditions/meetings will start in December 2021 and will continue up to the end of April 2022. Additional dates may be added after this, depending upon application numbers. KS4 workshops and meetings will take place over a fixed three day period from Wednesday 2nd March 2022 to Friday 4th March 2022 only. Please note we will be unable to see KS4 applicants at any other time.
- The date given for a workshop/meeting cannot be changed unless it is for a previously arranged hospital appointment or public exam (not mock).

2C) Procedure following workshop/audition/meeting

After each workshop/audition/meeting, decisions are made by a panel of staff, including those who have met the applicant, with a senior curriculum manager. The decision to offer a place is based on the criteria outlined previously; evidence concerning these criteria will include reports and references from current schools. Where there are two stages to the process on the same day with some applicants not progressing to the second stage, unsuccessful applicants will be informed orally at the time, with an email of confirmation within 14 days. In some cases there is a gap of a few weeks between stages; applicants will be informed whether they are to proceed to the second stage by an email. All other students will be informed by an email of the outcome as follows:

- an offer of a place, conditional on successful completion of the relevant key stage (see 3 v), OR
- an offer with special medical conditions attached (see 3 v), OR
- a place on the reserve list, OR



- a decision not to offer a place on the course applied for, with a recommendation that the candidate might wish to apply for an alternative course, OR
- a decision not to offer a place.

Brief feedback to assist in understanding the decision can be provided on written request after your application process has been completed. Requests for feedback must be received in writing within 14 days of the decision being communicated to the applicant. As the admissions process may still be ongoing, feedback may take some time although we will make every endeavour to respond to your request within six weeks. We are unable to provide feedback if it is your intention to apply for a second chance.

NB. We will endeavour to inform applicants of our final decision within four weeks of their workshop/audition/meeting, except for those who are not progressing to the second stage of a two-stage process, who will have this decision confirmed in writing within 14 days of the first stage. If you have attended a workshop/audition/meeting, we politely request you do not contact or email Student Services until after this date.

Please note; all decisions will be communicated via email. You will not receive any information by fax or telephone.

How we will communicate with you:

Please ensure that the email addresses provided are correct. We use this method to communicate with you using the information you provided on your application form. All responses are sent within our published time criteria and the School cannot therefore accept responsibility for any auditions or meetings that are missed due to either incorrect contact information supplied by the applicant/parent or where our correspondence has not been read by the applicant/parent within the published time criteria. Please ensure you check your junk/spam folders for any communications from us. We cannot accept responsibility for any missed information and will be unable to reschedule missed auditions/meetings. Please mark @brit.croydon.sch.uk a safe sender with your email provider.

2D) Procedure following an offer

When offer emails are sent, applicants are given a date by which written acceptance of the place offered must be received by the School. If the applicant fails to accept the place by the due date, it will be assumed that they have refused the place.

3) Further guidelines

i) Out of area

Out of area places are very restricted: the School received 10 out of area applications for each out of

area place available at Year 12 last year, with higher proportions in some performing arts subjects. Please note that candidates from outside the catchment area need to show exceptional merit to be offered a place; this criterion will be reflected in the decisions made at all stages of the admissions procedure, including the initial assessment of application forms, which would need to demonstrate the candidate's exceptional merit.

ii) Out of area (non UK/EEA National)

The School will accept applications from students who have the legal right to be a resident in the United Kingdom at the start of their study programme.

The UK's new points based immigration system applies and treats EU (other than Irish citizens) and non-EU citizens equally. Students who are nationals of EU (or European Economic Area (EEA)) countries (other than Irish citizens) who enter the UK after 31 December 2020 are not automatically eligible for funding and must be able to demonstrate that they are legally resident in the UK to be funded.

For applicants from outside the EEA, and potentially for those from within the EEA applications will be proceeded with only if it is clear (with evidence) that the parents will be relocating to work in the UK. The evidence required by the student is a United Kingdom's residence permit or the confirmation letter from The Home Office for EU Settlement status, if they come from outside of the UK.

In such circumstances, the School will consider when the child is expected to be resident in the UK and whether the parent's application to enter the UK has been or will be successful. In order that places offered are not wasted because they cannot be taken up, the School will not make an offer to any student resident overseas unless they have a right of residence in the UK or it is clear beyond reasonable doubt (e.g. evidenced by way of confirmation from a sponsoring employer) that the parent's application to enter and stay in the UK will be successful. It is the responsibility of parents to check that their children have a right, under their visa entry conditions, to study at a school. To help parents, we recommend they check that they have a right of abode or that the conditions of their immigration status otherwise permit them to access a state-funded school.

<https://www.gov.uk/guidance/schools-admissions-applications-from-overseas-children>

<https://www.gov.uk/right-of-abode>

For child welfare reasons we will not accept applications from children under 16 years old whose parents intend to remain abroad.

We regret we are unable to accept applications for Post 16 studies from students residing in Scotland, Wales, Northern Ireland, The Isle of Man and Channel Islands.

Admissions Policy & Procedure 2022/23



Please note in the event of being offered a place we require proof of eligibility before the start of the course. Failure to provide the required documentation will result in your place being withdrawn.

iii) Issues of Accommodation

The BRIT School is a day school. It is not responsible for the supervision of students outside of school hours. It has a large catchment area and the school day is longer than other schools. Students should preferably live within approximately one hour's travelling distance from the School.

- KS4 students should not move away from home to achieve a one hour travelling time, except when accommodation can be found with close relatives, who must then take on the day-to-day support of the student at the School.
- Post 16 students may live away from home if necessary, but parents must take responsibility for their accommodation being satisfactory, and make sure that the day-to-day support for the student is in place.

iv) Terms

The BRIT School year consists of five terms of approximately eight weeks, so BRIT School holidays do not always coincide with other institutions. The BRIT School does not give permission for BRIT School students to take vacations during term time.

v) Offers of Places

- Offers of places at The BRIT School are made during the preceding academic year. Therefore, it is important that the applicant, having been offered a place, does not drop their current standards of work and commitment in their current school

- Offers of places at The BRIT School are contingent on the previous Key Stage having been successfully completed: i.e. in the case of KS4 applicants, KS3 must be completed; in the case of Post 16 applicants (including BRIT School internal applicants) KS4 must be completed to a satisfactory standard
- If there is doubt as to the student's medical capacity to undertake a course, an offer may be contingent on the results of a medical assessment.

Conclusion of Further Guidelines

It is essential that the above guidelines are understood and acted upon to enable the student to concentrate on their studies. Failure to do so could result in a student not being admitted to the School.

The School's authorised catchment area is all of Greater London EXCEPT: Postal districts CM13 & 14; EN 4 - 8; HA1 - 8; KT8, RM 1 - 7, 11, 12, 14, 15; UB8 - 10; WD2, 3 & 6.

In addition the following postal districts are included: BR6 & 8; CR0, 2, 3, 5, 6; DA1, 2, 4, 5, 9, 10, 14; KT4, 6, 9, 17- 21; RH1, 2, 6 - 11; SM2, 3 & 7; TN13, 14, 16; E18 & E20.

A full list of inclusive postcodes can be downloaded from www.brit.croydon.sch.uk

In addition, special consideration can be given to applicants of exceptional merit who are out of catchment area up to a maximum of 10% of the intake; Refer to 3i for more information.

Admissions Appeals Policy

The objectives of the Admissions Appeals Policy and Procedure are to ensure that:

- a) the School's admissions appeal procedures are clear
- b) throughout the process of admissions the proper procedures are followed
- c) you can appeal for a second chance, if appropriate grounds for appeal are demonstrated.

Please note that we fully understand that the admissions process and meeting can be nervewracking and that we will always try to put the applicant at ease when meeting them. Nerves will be taken into consideration for every applicant, therefore nerves are not grounds for requesting an appeal.

Stage 1:

If an applicant appeals against a decision not to be invited for an initial workshop/audition and meeting, their application form will be reviewed by a member of the Senior Leadership Team who will either confirm the original decision or move the application to the next stage. Appeals must be received, using an online form (the link can be found on our website) within 14 days

of the date of the decision being communicated. We are unable to provide written feedback for these applications.

If, after the first meeting/audition/workshop, an applicant is not offered a place, or a place with special conditions, or a place on the Reserve list, the applicant may appeal for a second chance, using an on-line form (the link can be found on our website) within 14 days of the date of the decision documentation.

We are unable to accept verbal, emailed or written requests for appeals. The applicant must refer to the admissions criteria (1B) and should clearly explain why they were unable to demonstrate the criteria on the day, and why they feel they ought to be offered a second chance. Please note we are unable to provide feedback on the first meeting/audition/workshop if you wish to appeal.

Please note that the School rigorously quality-assures the second chance process so that all panels will be working to the same standards and criteria, both on the day of the first meeting/audition/workshop and at any second chance meeting.

Second chance meeting/audition/workshops are conducted by a teacher from the relevant department and a senior member of staff. During the first and second chance workshop/audition/meeting, the School will use its professional judgement of applicants, based on the criteria laid out in the admissions policy. Please note that candidates from outside the catchment area need to show exceptional merit to be offered a place; this criterion will be reflected in the decisions made at all stages of the admissions and appeals procedure. Therefore being out-of-area does not constitute appropriate grounds for appeal. The date given for an appeal workshop/audition/meeting cannot be changed unless it is for a previously arranged hospital appointment or public exam (not mocks).

You must be prompt for this meeting as we are unable to reschedule if you miss the allocated time slot.

Stage 2:

If, after the second chance workshop/audition/meeting, an applicant is not offered a place or a place with the special conditions referred to in the Further Guidelines of the Admission Policy, an appeal under Stage 2 of the appeals process may be made. An appeal at Stage 2 may only be made on the grounds that the School has not followed its own admissions procedure. This is referred to as the "Permitted Grounds". Any appeal not made on Permitted Grounds will not be allowed to proceed. It is therefore very important that the letter requesting an appeal under Stage 2 must state clearly how the School has not followed its own procedure in reaching a decision not to admit an applicant.

A Stage 2 appeal must be made to the Chair of Governors using an on-line form (the link will be supplied in your second chance decision documentation). We are unable to accept verbal, emailed or written requests for appeals. The form should be submitted within 14 days of the date of the decision documentation. In the case of Key Stage 4 applicants, the parent/guardian must complete the form. In the case of Post 16 applicants, either the applicant or their parent/guardian may complete the form. You must clearly state the grounds for appeal in the relevant section on the form. You will receive an email confirmation of receipt.

If the Chair of Governors considers that the appeal is made on Permitted Grounds, it will then be considered by an appeals panel. An appeals panel consists of three people, including a chair who is independent of the School, supported by a clerk who is also independent of the School. The appellant and School will both be required to submit evidence by a set date ahead of the meeting, and the panel may restrict the addition of further evidence after this date.

The panel may undertake such enquiry into the matter as it considers appropriate and necessary to reach a determination. The panel also may choose to invite the applicant and/or parent/guardian to a meeting if this is considered necessary to better understand the grounds for the request or because the panel wishes to ask questions of the applicant or parent/guardian. After careful consideration of the request for a review and any representations made by the applicant, parent/guardian and the School, the panel will conclude by:

- upholding the original decision not to offer the applicant a place; or
- provided that there is sufficient evidence before the panel that the applicant meets the required artistic standard, determine that the applicant should be offered a place [although please note that the appeal panel will not introduce its own tests to assess artistic suitability]
- referring the application for admission back to the School to be considered afresh. The decision of the panel, which is final, will be communicated in writing.

Photographic contributions made by BRIT students and staff

Emma Banton, Olivia Chew, Libby Cooper, Claire Gildersleve, Ian Hippolyte, Andy Howes, Joshua Lloyd, Millie McGuffie, Katy Sechiari, Ben Shelley, Louise Ring, Simon Roberts, Naomi Ward, Fiona Whyte.

BRIT Transforms

On the 1st September 1991,
The BRIT School opened its
doors for the first time.

30 years later, we celebrate
the 10,000 humans and artists who
are now found in every corner of
the creative industries and beyond.



"You get to express yourself
the way you're supposed to,
as opposed to being told
how you're supposed to
express yourself"

Theatre Graduate **Loyle Carner.**
#AlwaysBRIT

Thank You

To every company, organisation and individual who has supported us this past year, **thank you**. Without you, none of this would be possible. You are at the heart of our efforts to **#keepBRITspecial**.



Supported using public funding by
**ARTS COUNCIL
ENGLAND**



NETFLIX



Royal Bank
of Canada



With special thanks to



Support our work

As we reflect on three decades of transformational impact, we are launching our 'BRIT Transforms' Campaign, looking to #keepBRITspecial for future generations of young artists, regardless of their background, beliefs or who they are.

To be part of the future of The BRIT School and to join our BRIT Transforms Campaign, please contact:

Jon Pelluet (Director of Development) on jpelluet@brit.croydon.sch.uk or visit brit.croydon.sch.uk/support for more information.

To donate now, please visit cafdonate.cafonline.org/11242



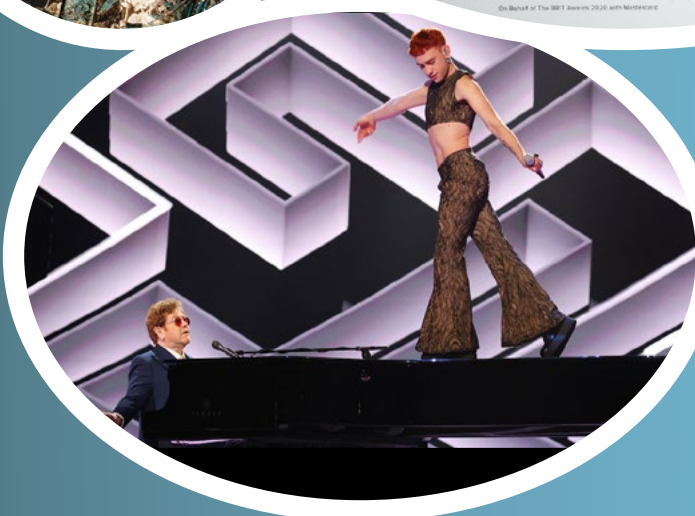
<https://www.brits.co.uk>

THE **BRIT** TRUST

IMPROVING LIVES THROUGH THE POWER OF MUSIC AND THE CREATIVE ARTS.

FUNDED LARGELY BY THE ANNUAL BRIT AWARDS, THE BRIT TRUST HAS DONATED OVER £27 MILLION TO EDUCATION AND WELLBEING CHARITIES THAT INSPIRE YOUNG PEOPLE TO REALISE THEIR FULL POTENTIAL, REGARDLESS OF THEIR ETHNICITY, GENDER, OR SEXUALITY.

THE BRIT TRUST IS A PROUD OUTSTANDING SUPPORTER OF THE BRIT SCHOOL, THE AMAZING STUDENTS, AND THE CONTRIBUTION THEY GO ON TO MAKE TO OUR CULTURE AND ECONOMY.



BRITTRUST.CO.UK
BPI.CO.UK

bpi PROMOTING
BRITISH
MUSIC

BRIT
AWARDS
2021

Photos: JMEInternational